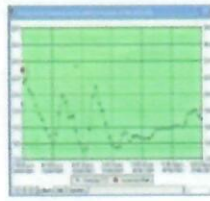




**EURO  
CHILL**  
Pty Ltd



Tel: 1300 459 140 M: 0418 330 094 E: jackjboer@gmail.com W: under construction


## QUICK START INSTRUCTIONS for VS80-EC, VS310-EC, & VS370-EC Vaccine-Refrigerators

- Simply plug in and turn on to start cooling cycle
- Set Temperature has been set for 4°C, with 2° C differential. The temp. will normally oscillate from 4°C to 6° C


### Main Parameters

- t1 temp inside the Refrig.
- t hi maximum probe Temp recorded since last reset
- t lo minimum probe temp recorded since last reset

### Access to MENU and information displayed

- Press and release button *i*
- With up and down arrow select the data to be displayed
- Press  button to display value
- To exit from Menu, press x button

### Reset of min. t lo and max. t hi recordings

- With up or down arrow, select the parameter to be reset
- To display the value, 'press and hold'  button
- Reset by pressing x button

## LOGTAG ANALYSER SOFTWARE

- Download the Software directly from [www.globaltemp.com.au](http://www.globaltemp.com.au) see 'Download Software' under the Data Loggers Heading (at the bottom)
- Follow the Instructions on the Data Logger Start-up Sheet
- Mount the Data Logger 'Holder' in a convenient location inside the Refrigerator with the double sided tape provided
- Once the Logger has been 'Set up' and started, place the Data Logger in the holder, making sure the protective cap is on the USB Port